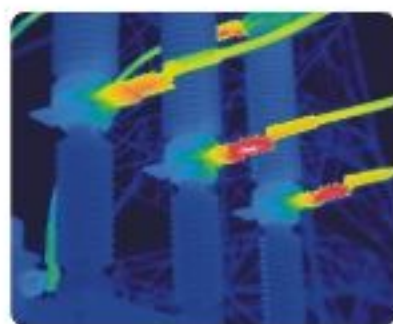
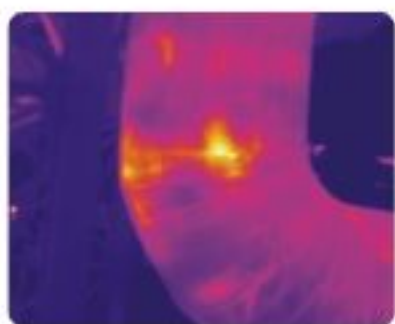
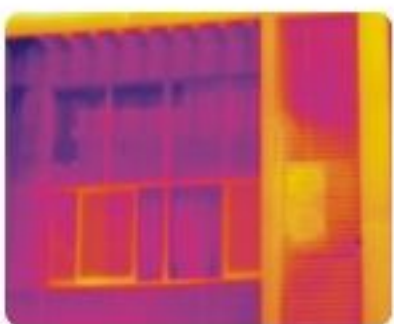


Thermal Imaging Cameras
TI170 / TI175 / TI390 / TI395



Thermal Imaging Cameras

TI170 | TI175 | TI390 | TI395



● TI390 & TI395



● TI170 & TI175

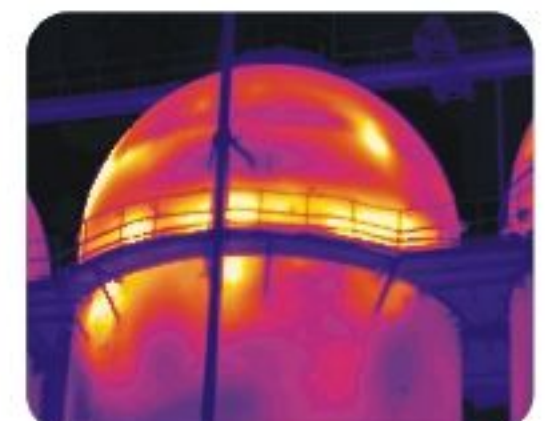
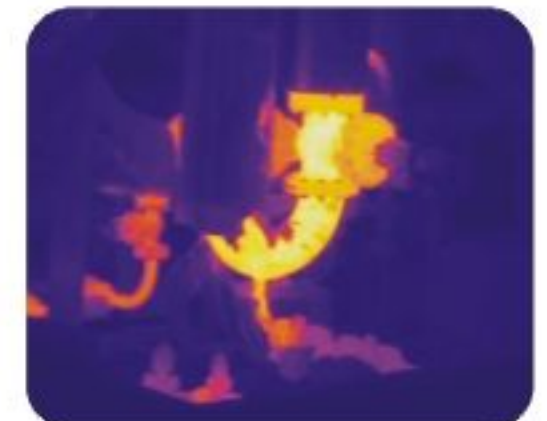
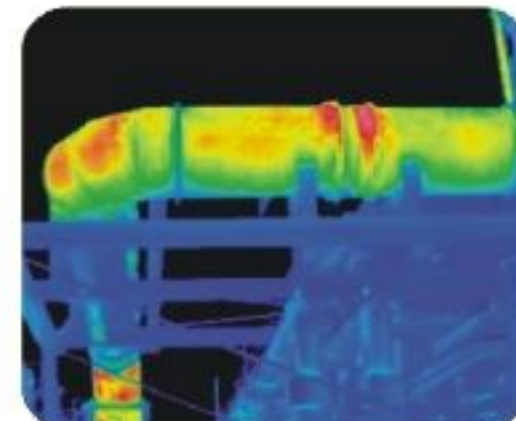
ULIRvision TI170|TI175|TI390|TI395 are the third generation thermal imaging system products. With cutting-edge infrared technology, including high sensitivity IR detector(25 μ m pixel pitch, NETD<50mK) and ergonomic design, they are the ideal choice for professional thermographers to have the most efficient instrument for maintenance inspections.

ULIRvision TI170|TI175|TI390|TI395 are affordable, easy-to-operate high performance thermal images that offer accurate temperature measurements at the safe distances. They are integrated 3.0 megapixel camera to assist in reporting, thermal and visual images taken can be stored in standard JPEG formats, user obtain easily the thermograph results from the multi-function IRSee analysis software. With Auto/Motor focus features, they deliver one-hand operation to make the inspection process quickly and conveniently.

ULIRvision TI170|TI175|TI390|TI395 have a wide range temperature measurement to satisfy variety of thermograph applications. TI170|TI390 are special for Building application, TI175|TI395 are special for kinds of industry applications, the difference is from IR detector level, temperature measurement, and other features. With crisp thermal image quality, they enable you to identify the small temperature difference that could cause big problems.

Applications

- Building Diagnostics
- Electrical/Mechanical Inspection
- Research & Development
- Automation Applications
- Preventative & Predictive Maintenance



Features

- Compact volume, light weight, POCKET camera**
 With 393g weight and 128x62x154mm size, it is very easy and convenient for user to bring it to make thermograph.
- Excellent thermal image and high accuracy temperature measurement**
 $\pm 2\%$ accuracy, 50mK thermal sensitivity to provide reliable performance.
- Folding and 270° rotatable display**
 Folding and rotatable display delivers clear view in any position during thermographing.
- Auto/Motor focus for one-hand operation**
 With auto/motorized focus, user can focus any thermal image quickly and easily.
- Bright LED light, Laser pointer**
 Helps user to locate objects easily and operate thermal images in poor light ambience.
- Built-in digital camera**
 3.0 megapixel resolutions provide clear visual images to aid in reporting.
- Wide temperature measurement range**
 Covering a standard temperature range of -20°C to 600°C , up to 1200°C for optional.
- Built-in microphone to record 40sec voice annotation**
 Allows user to take quick voice comments on every thermal image, the voice annotation will be stored with the thermal images together.
- Wide-angle and telephoto IR lens**
 With clipping IR lens design, TI170|TI175|TI390|TI395 provide a larger image section and a quick overview with wide-angle lens, and more details image for measurement objects with the telephoto lens.
- Scalable P-I-P and Thermal fusion**
 Overlay thermal and visual images for easy location and clear documentation.
- Automatic Hot/Cold/Average temperature detection**
 Critical temperature conditions are shown with the automatic Hot/Cold/Average spot recognition. Uninterrupted error identification on site is therefore ensured.
- Real-time thermal video transfer to PC via USB, and remote transfer via MSN and Skype**
 Multi-transferring real-time thermal video offers fast and convenient thermograph results.
- Intuitive and easy operating menu**
 One-hand operation with intuitive menu offers a fast and simple operation for targeted maintenance applications.
- New generation IRSee analysis software**
 Free IRSee analysis software comes with TI170|TI175|TI390|TI395, IRSee allows users to analyse thermal images and visible images, and export all information into Microsoft Office Word, and Users can edit reports easily.

IR-Fusion Viewing Options



Infrared



PIP



Superpose



Fusion



Visual



Folding, 270 rotatable LCD



Easily putting on IR lens



IR lenses for application choice



Free IRSee software for analysis & reporting

Technical Specifications

Item	TI170	TI175	TI390	TI395
● Detector Data				
<ul style="list-style-type: none"> Detector type Pixel pitch Spectral range IFOV/Mini Focus Spatial resolution(IFOV) Sensitivity/NETD 	Uncooled FPA, 160×120 pixels 25 μm 8~14 μm 21° × 16° /0.15m (standard lens) 42° × 32° /0.1m (wide lens, optional) 10° × 8° /1m (telephoto lens, optional) 2.3mrad <50mK@+30℃	Uncooled FPA, 384×288 pixels 25 μm 8~14 μm 21° × 16° /0.4m (standard lens) 38° × 28° /0.3m (wide lens, optional) 11° × 8.5° /1.2m (telephoto lens, optional) 1.2mrad <65mK@+30℃	Uncooled FPA, 384×288 pixels 25 μm 8~14 μm 21° × 16° /0.4m (standard lens) 38° × 28° /0.3m (wide lens, optional) 11° × 8.5° /1.2m (telephoto lens, optional) 1.2mrad <65mK@+30℃	Uncooled FPA, 384×288 pixels 25 μm 8~14 μm 21° × 16° /0.4m (standard lens) 38° × 28° /0.3m (wide lens, optional) 11° × 8.5° /1.2m (telephoto lens, optional) 1.2mrad <65mK@+30℃
● Image Performance				
<ul style="list-style-type: none"> Image Display Image modes Thermal fusion Picture in Picture Frequency Focus Digital Zoom Visual camera Spotlight 	3.2" 270° tiltable LCD Thermal image, visual image, thermal fusion, picture-in-picture, thumbnail gallery IR image shown above, below or within temp interval on visual image Resizable and movable IR area on visual image 50Hz(PAL)/60Hz(NTSC) Auto/Motor 1-4x Continuous 3.0 mega pixel 10cd/m ²	3.2" 270° tiltable LCD Thermal image, visual image, thermal fusion, picture-in-picture, thumbnail gallery IR image shown above, below or within temp interval on visual image Resizable and movable IR area on visual image 50Hz(PAL)/60Hz(NTSC) Auto/Motor 1-8x Continuous 3.0 mega pixel 10cd/m ²	3.2" 270° tiltable LCD Thermal image, visual image, thermal fusion, picture-in-picture, thumbnail gallery IR image shown above, below or within temp interval on visual image Resizable and movable IR area on visual image 50Hz(PAL)/60Hz(NTSC) Auto/Motor 1-8x Continuous 3.0 mega pixel 10cd/m ²	3.2" 270° tiltable LCD Thermal image, visual image, thermal fusion, picture-in-picture, thumbnail gallery IR image shown above, below or within temp interval on visual image Resizable and movable IR area on visual image 50Hz(PAL)/60Hz(NTSC) Auto/Motor 1-8x Continuous 3.0 mega pixel 10cd/m ²
● Measurement				
<ul style="list-style-type: none"> Temperature range Temperature accuracy Spotmeter Area Line profile Isotherms analysis Dew point alarm Hot/cold spot Auto detection Emissivity correction Alarm Multiple language menu 	-20℃ ~ 100℃ (Building) -20℃ ~ 250℃ (Industrial) -20℃ ~ 600℃ (optional A) -20℃ ~ 1200℃ (optional B) ± 2℃ or ± 2% of reading 4 adjustable spot 3 adjustable boxes with max./min./average Horizontal/vertical Detect high/low temperature/interval Yes No Max/Min/Average temp Variable from 0.01~1.0 Voice and Color 10languages(English, French, Italian, German, Spanish, Portuguese, Russian, Korean, Japanese, Simplified Chinese & Traditional Chinese)	-20℃ ~ 250℃ (Industrial) -20℃ ~ 600℃ (optional A) -20℃ ~ 1200℃ (optional B) ± 2℃ or ± 2% of reading 4 adjustable spot 3 adjustable boxes with max./min./average Horizontal/vertical Detect high/low temperature/interval Yes No Max/Min/Average temp Variable from 0.01~1.0 Voice and Color 10languages(English, French, Italian, German, Spanish, Portuguese, Russian, Korean, Japanese, Simplified Chinese & Traditional Chinese)	-20℃ ~ 100℃ (Building) -20℃ ~ 250℃ (Industrial) -20℃ ~ 600℃ (optional A) -20℃ ~ 1200℃ (optional B) ± 2℃ or ± 2% of reading 4 adjustable spot 3 adjustable boxes with max./min./average Horizontal/vertical Detect high/low temperature/interval Yes No Max/Min/Average temp Variable from 0.01~1.0 Voice and Color 10languages(English, French, Italian, German, Spanish, Portuguese, Russian, Korean, Japanese, Simplified Chinese & Traditional Chinese)	-20℃ ~ 250℃ (Industrial) -20℃ ~ 600℃ (optional A) -20℃ ~ 1200℃ (optional B) ± 2℃ or ± 2% of reading 4 adjustable spot 3 adjustable boxes with max./min./average Horizontal/vertical Detect high/low temperature/interval Yes No Max/Min/Average temp Variable from 0.01~1.0 Voice and Color 10languages(English, French, Italian, German, Spanish, Portuguese, Russian, Korean, Japanese, Simplified Chinese & Traditional Chinese)
● Set-up commands				
<ul style="list-style-type: none"> Real-time Video Color palettes Set-up commands Measuring Calibration 	Transfer via USB Iron, anti-iron, feather red, black hot, white hot, medical Date/time, temperature units℃/°F/K, language, scale Automatic, based on inputs	Transfer via USB Iron, anti-iron, feather red, black hot, white hot, medical Date/time, temperature units℃/°F/K, language, scale Automatic, based on inputs	Transfer via USB Iron, anti-iron, feather red, black hot, white hot, medical Date/time, temperature units℃/°F/K, language, scale Automatic, based on inputs	Transfer via USB Iron, anti-iron, feather red, black hot, white hot, medical Date/time, temperature units℃/°F/K, language, scale Automatic, based on inputs
● Image storage				
<ul style="list-style-type: none"> Storage type Storage capacity Storage format Periodic image storage 	2G SD card, Building-in flash Up to 800 images in built-in flash card Up to 6600 images in 2G SD card Standard JPEG, including measurement data user defined, 6 seconds at least	2G SD card, Building-in flash Up to 600 images in built-in flash card Up to 5000 images in 2G SD card Standard JPEG, including measurement data user defined, 6 seconds at least	2G SD card, Building-in flash Up to 600 images in built-in flash card Up to 5000 images in 2G SD card Standard JPEG, including measurement data user defined, 6 seconds at least	2G SD card, Building-in flash Up to 600 images in built-in flash card Up to 5000 images in 2G SD card Standard JPEG, including measurement data user defined, 6 seconds at least
● Laser pointer				
<ul style="list-style-type: none"> Grade/Type 	Class II, 1mW/635nm red	Class II, 1mW/635nm red	Class II, 1mW/635nm red	Class II, 1mW/635nm red
● Power system				
<ul style="list-style-type: none"> Battery Charging system AC supply Voltage Power management 	Li-ion, ≥3 hours operating time In camera or AC adapter 110~240V AC, 50/60Hz, 5V DC output 5V±5% DC Automatic shutdown (user selectable)	Li-ion, ≥3 hours operating time In camera or AC adapter 110~240V AC, 50/60Hz, 5V DC output 5V±5% DC Automatic shutdown (user selectable)	Li-ion, ≥3 hours operating time In camera or AC adapter 110~240V AC, 50/60Hz, 5V DC output 5V±5% DC Automatic shutdown (user selectable)	Li-ion, ≥3 hours operating time In camera or AC adapter 110~240V AC, 50/60Hz, 5V DC output 5V±5% DC Automatic shutdown (user selectable)
● Environmental data				
<ul style="list-style-type: none"> Operating temperature range Storage temperature range Humidity IP level Shock Vibration 	-20℃ ~ +50℃ -40℃ ~ +70℃ ≤90% (non-condensation) IP50 25G, IEC60068-2-29 2G, IEC60068-2-6	-20℃ ~ +50℃ -40℃ ~ +70℃ ≤90% (non-condensation) IP50 25G, IEC60068-2-29 2G, IEC60068-2-6	-20℃ ~ +50℃ -40℃ ~ +70℃ ≤90% (non-condensation) IP50 25G, IEC60068-2-29 2G, IEC60068-2-6	-20℃ ~ +50℃ -40℃ ~ +70℃ ≤90% (non-condensation) IP50 25G, IEC60068-2-29 2G, IEC60068-2-6
● Physical data				
<ul style="list-style-type: none"> Camera weight, incl. battery and standard lens Camera size(LxWxH) Size of screw nut on tripod 	393g 128×62×154mm 1/4" _20	393g 128×62×154mm 1/4" _20	393g 128×62×154mm 1/4" _20	393g 128×62×154mm 1/4" _20
● Data communication interfaces				
<ul style="list-style-type: none"> USB Video output Audio output 	Data transfer to and from PC PAL/NTSC Yes	Data transfer to and from PC PAL/NTSC Yes	Data transfer to and from PC PAL/NTSC Yes	Data transfer to and from PC PAL/NTSC Yes
● Packing includes				
<ul style="list-style-type: none"> Standard Optional Accessories 	Infrared camera with standard lens, 2 Batteries, Battery charger, USB cable, SD card, SD card reading, IRSee software CD-ROM, Power supply, User documentation, Warranty extension card or registration card, Calibration certificate. IR lens, Li-ion battery			

Zhejiang ULIRvision Technology Co., LTD.

Add: 2nd Floor Building D The Westlake International Plaza of Science & Technology, #391 Wener Road, Hangzhou 310012 Zhejiang China
 Tel.: +86 (0)571 8720 9879 Fax: +86 (0)571 8512 5358 Http: www.ulirvision.com E-mail: overseas@ulirvision.com